

# Panel Mounted Switches – TP7

Products manufactured after July 1, 2006  
are RoHS compliant

## TP7

Panel cut-out (mm) Ø 16.2/22.5/30.3/43.3

Characteristics

- piezo technology
- momentary
- sealed IP68
- with or without illumination, two colors
- solid state output

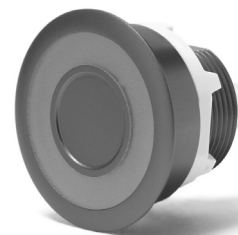
Rating 3 to 35 VAC/VDC, 200 mA

Dimensions (mm)

- Ø 18
- Ø 25
- Ø 36
- Ø 48

Actuator housing in different colors

Approvals None



## Specifications

Mechanism	Piezo electronic, without auxilliary energy		
Actuating force	5N maximum at an actuating speed 500 to 1500 mm/s		
Closing impulse duration	10 to 1000 ms - dependent on force and speed of actuation		
Mounting	Central fixing from the rear with metal lock nut		
Protection	IP68 (after installation)		
Housing and actuator material	Anodised aluminum and stainless steel		
Illumination	LED ( 18mm switch non-illuminated only)		
Temperature range °C	-40°C to +105°C (non-illuminated), -40°C to +85°C (illuminated)		
Life expectancy	>15 × 10 <sup>6</sup> cycles		
Contact resistance	<10 Ohm (on)		
Insulation resistance	>5M0hm (off)		
Terminals	Prewired; 2.8mm × 0.8mm faston; Molex-style 3.5 & 6 pin; AMP-style 4 pin		
Power consumption (illuminated types)	red or green:	12V IP = 40 mA	24V IF = 20 mA
	red/green:	12V IP = 2 × 20 mA	24V IF = 2 × 20 mA

## Recommended maximum electrical ratings

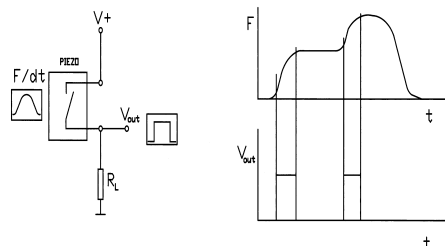
Voltage (max)	Resistive load (A)
3 to 35 VUC	0.2 A (0.7 pf)

## Technical information

The piezo sensor converts pressure into voltage signals. These analogue voltage signals are then processed within the switch to form switching signals, using field effect transistors (FET).

Due to the internal resistor, the circuit state is dependent upon actuating force and speed, means of operation and the discharge time of the R-C system. Standard digital or relay technology can be employed to create individual timed delay, flip-flop and power amplification circuits.

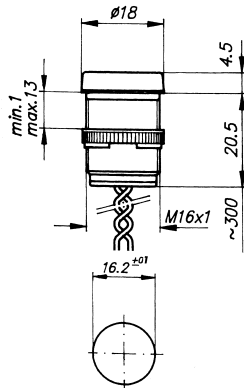
The circuit state diagram shows the approximate relationship between the force/time curve to the voltage circuit state:



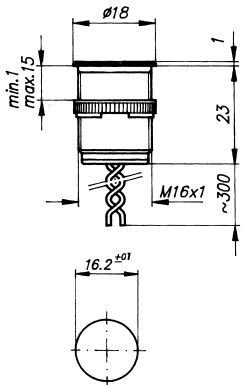
# Panel Mounted Switches – TP7

Products manufactured after July 1, 2006  
are RoHS compliant

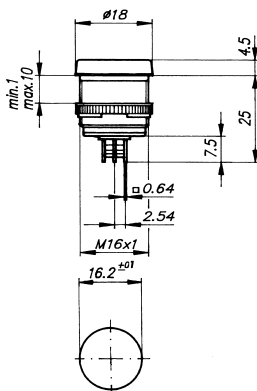
Dimensions (mm) Non-illuminated



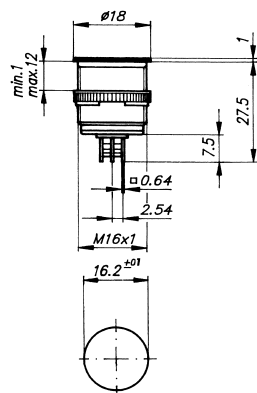
Ø 18, raised housing, prewired



Ø 18, flush housing, prewired

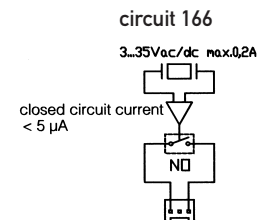
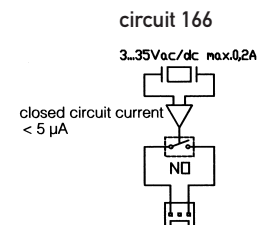
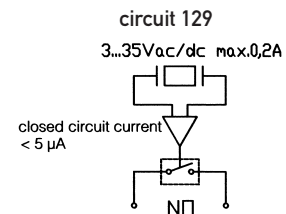
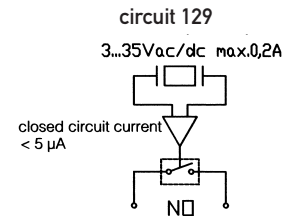


Ø 18, raised housing, Molex-style 3 pin



Ø 18, flush housing, Molex-style 3 pin

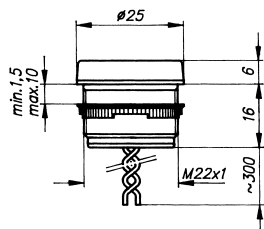
Circuit diagram



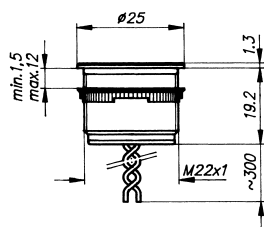
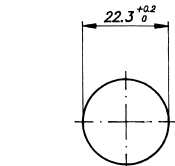
# Panel Mounted Switches – TP7

Products manufactured after July 1, 2006  
are RoHS compliant

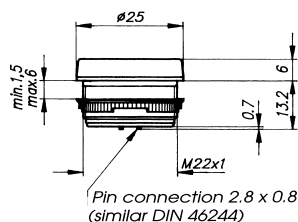
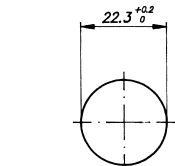
Dimensions (mm) Non-illuminated



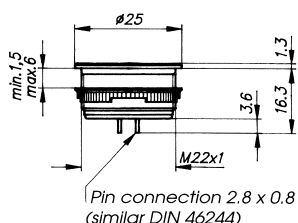
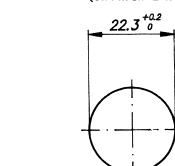
Ø 25, raised housing, prewired



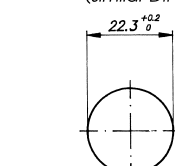
Ø 25, flush housing, prewired



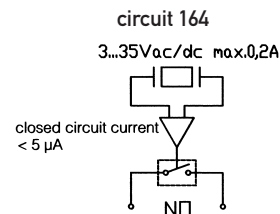
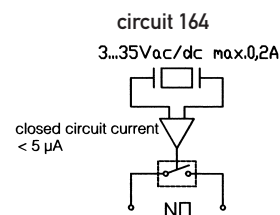
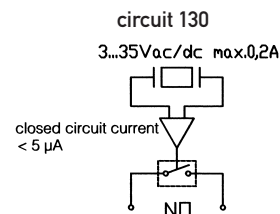
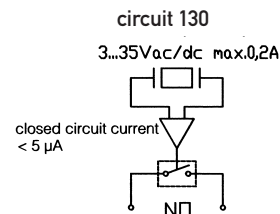
Ø 25, raised housing, solder connections 2.8 x 0.8



Ø 25, raised housing, solder connections 2.8 x 0.8



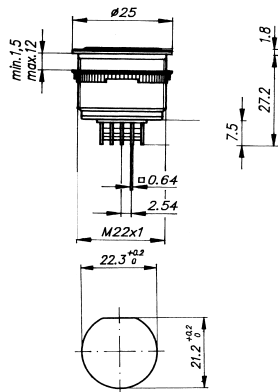
Circuit diagram



# Panel Mounted Switches – TP7

Products manufactured after July 1, 2006  
are RoHS compliant

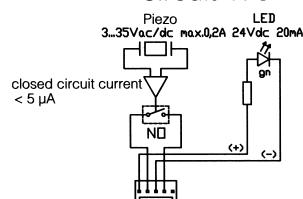
Dimensions (mm) Illuminated



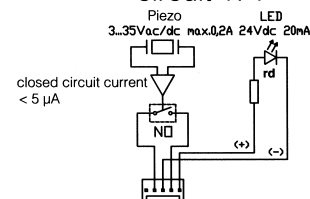
Ø 25, flush housing, Molex-style 5 pin

Circuit diagram

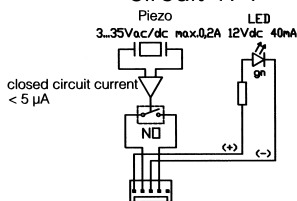
circuit 170



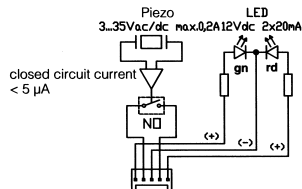
circuit 171



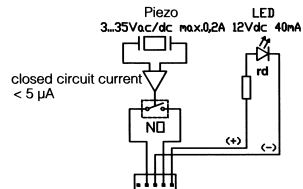
circuit 174



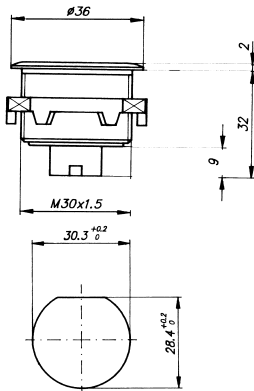
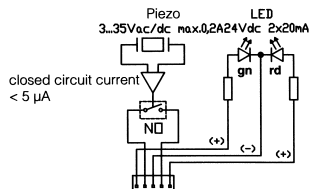
circuit 178



circuit 175



circuit 179

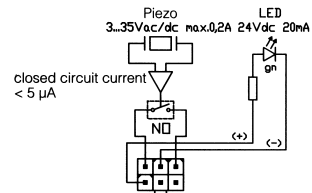


Ø 36, flush housing, Molex-style 6 pin

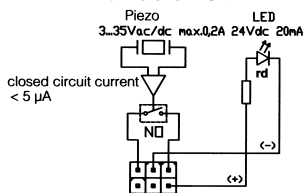
Circuit diagram

Circuit diagrams

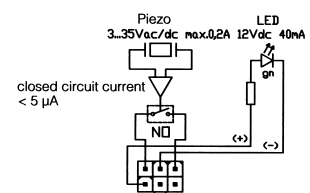
circuit 180



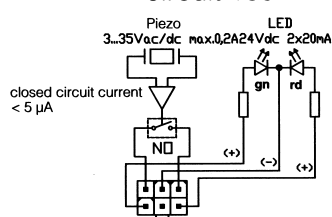
circuit 181



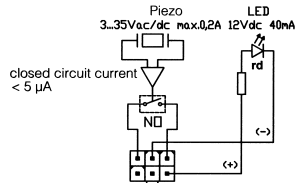
circuit 184



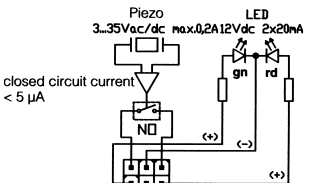
circuit 159



circuit 185



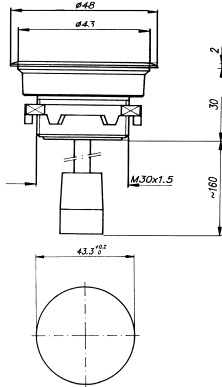
circuit 188



# Panel Mounted Switches – TP7

Products manufactured after July 1, 2006  
are RoHS compliant

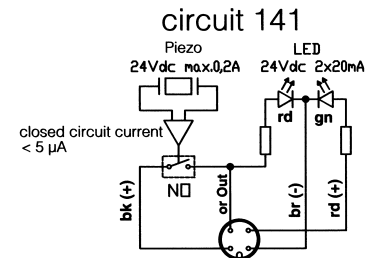
Dimensions (mm) Illuminated



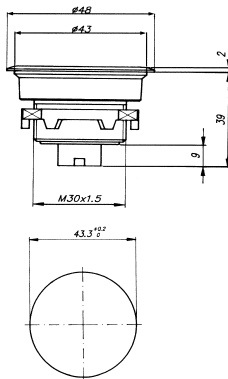
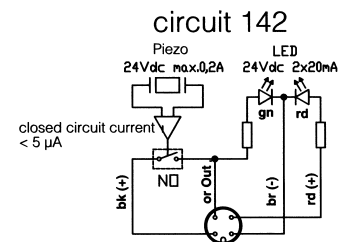
Ø 48, flush housing, wired with round connector  
AMP-style 4 pin

Internally wired visual indicator, red

Circuit diagram

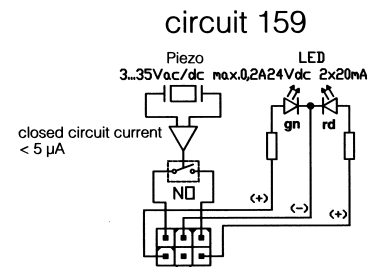
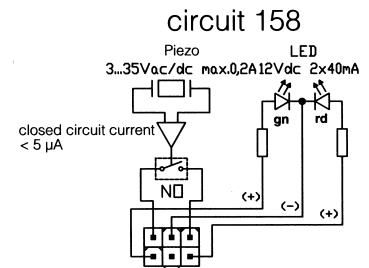


Internally wired visual indicator, green



Ø 48, flush housing, Molex-style 6 pin

Circuit diagram



Amp is a registered tradename of Tyco International Ltd.

# Panel Mounted Switches – TP7

Products manufactured after July 1, 2006  
are RoHS compliant

## Ordering Reference

To find parts at a distributor near you, please access [www.saia-burgess-usa.com](http://www.saia-burgess-usa.com) and click on link called "Check Availability of Stock Products". If you do not find what you are looking for, try again without using the TH prefix.

Range	TP7						
Panel cut-out	1	16.2 mm (for Ø 18 mm only)					
	2	22.5 mm (for Ø 25 mm only)					
		Function	Actuator	Housing	Connector	Environmental protection	Part No. color (XX)
Switch body	MD1A	Momentary 1NO; 35V / 0.2A	Ø 18 mm	Raised Aluminum	Prewired	IP68	TH7020XX129
	MD2A	Momentary 1NO; 35V / 0.2A	Ø 18 mm	Raised Aluminum	3 Pin MOLEX	IP68	TH7025XX166
	MD1B	Momentary 1NO; 35V / 0.2A	Ø 18 mm	Flush Aluminum	Prewired	IP68	TH7021XX129
	MD2B	Momentary 1NO; 35V / 0.2A	Ø 18 mm	Flush Aluminum	3 Pin MOLEX	IP68	TH7026XX166
Non-illuminated	MF1A	Momentary 1NO; 35V / 0.2A	Ø 25 mm	Raised Aluminum	Prewired	IP68	TH7030XX130
	MF2A	Momentary 1NC; 35V / 0.2A	Ø 25 mm	Raised Aluminum	Prewired	IP68	TH7030XX131
	MF4A	Momentary 1NO; 35V / 0.2A	Ø 25 mm	Raised Aluminum	2.8 × 0.8 mm	IP68	TH7035XX164
	MF1B	Momentary 1NO; 35V / 0.2A	Ø 25 mm	Flush Aluminum	Prewired	IP68	TH7031XX130
	MF2B	Momentary 1NC; 35V / 0.2A	Ø 25 mm	Flush Aluminum	Prewired	IP68	TH7031XX131
	MF4B	Momentary 1NO; 35V / 0.2A	Ø 25 mm	Flush Aluminum	2.8 × 0.8 mm	IP68	TH7036XX164
Illuminated	MG1B	Momentary 1NO; 35V / 0.2A 12V/40mA LED red	Ø 25 mm	Flush Aluminum	5 pin MOLEX	IP68	TH7055XX175
	MG2B	Momentary 1NO; 35V / 0.2A 24V/20mA LED red	Ø 25 mm	Flush Aluminum	5 pin MOLEX	IP68	TH7055XX171
	MG3B	Momentary 1NO; 35V / 0.2A 12V/40mA LED green	Ø 25 mm	Flush Aluminum	5 pin MOLEX	IP68	TH7055XX174
	MG4B	Momentary 1NO; 35V / 0.2A 24V/20mA LED green	Ø 25 mm	Flush Aluminum	5 pin MOLEX	IP68	TH7055XX170
	MG5B	Momentary 1NO; 35V / 0.2A 12V/40mA LED red/green	Ø 25 mm	Flush Aluminum	5 pin MOLEX	IP68	TH7055XX178
	MG6B	Momentary 1NO; 35V / 0.2A 24V/20mA LED red/green	Ø 25 mm	Flush Aluminum	5 pin MOLEX	IP68	TH7055XX179
Actuator color (XX)	00	Natural	} Please select appropriate color code reference to complete the switch part no. eg. TH702004129				
	01	Yellow					
	02	Green					
	04	Red					
	05	Black					
	08	Dark Blue					
Illumination	X	Non-illuminated					
	B	12V	(for illuminated switch bodies only)				
	C	24V	(for illuminated switch bodies only)				
Illumination color	X	Non-illuminated					
	2	Green LED	(for illuminated switch bodies only)				
	4	Red LED	(for illuminated switch bodies only)				
	9	Red/Green LED	(for illuminated switch bodies only)				

Stainless steel versions, available upon request.

# Panel Mounted Switches – TP7

Products manufactured after July 1, 2006  
are RoHS compliant

## Ordering Reference

To find parts at a distributor near you, please access [www.saia-burgess-usa.com](http://www.saia-burgess-usa.com) and click on link called "Check Availability of Stock Products". If you do not find what you are looking for, try again without using the TH prefix.

Range	TP7					
Panel cut-out	3	30.3 mm (for Ø 36 mm only)				
	4	43.3 mm (for Ø 48 mm only)				
		Function	Actuator	Housing	Connector	Environmental protection
Switch body Illuminated	MH1B	Momentary 1NO; 35V / 0.2 A 12V/40mA LED red	Ø 36 mm	Flush Aluminum	6 pin MOLEX	IP68
	MH2B	Momentary 1NO; 35V / 0.2 A 24V/20mA LED red	Ø 36 mm	Flush Aluminum	6 pin MOLEX	IP68
	MH3B	Momentary 1NO; 35V / 0.2 A 12V/40mA LED green	Ø 36 mm	Flush Aluminum	6 pin MOLEX	IP68
	MH4B	Momentary 1NO; 35V / 0.2 A 24V/20mA LED green	Ø 36 mm	Flush Aluminum	6 pin MOLEX	IP68
	MH5B	Momentary 1NO; 35V / 0.2 A 12V/2 × 20mA LED red/green	Ø 36 mm	Flush Aluminum	6 pin MOLEX	IP68
	MH6B	Momentary 1NO; 35V / 0.2 A 24V/2 × 20mA LED red/green	Ø 36 mm	Flush Aluminum	6 pin MOLEX	IP68
Illuminated	MJ1B	Momentary 1NO; 35V, 0.2 A 24V, 2 × 20 mA LED green/red	Ø 48 mm	Flush Aluminum	6 pin MOLEX	IP68
	MJ2B	Momentary 1NO; 35V, 0.2 A 12V, 2 × 40 mA LED green/red	Ø 48 mm	Flush Aluminum	6 pin MOLEX	IP68
	MJ3B	Momentary 1NO; 24V, 0.2 A 24V, 2 × 20 mA LED red/green	Ø 48 mm	Flush Aluminum	4 pin AMP	IP68
	MJ4B	Momentary 1NO; 24V, 0.2 A 24V, 2 × 20 mA LED green/red	Ø 48 mm	Flush Aluminum	4 pin AMP	IP68
Actuator color (XX)	00	Natural	Please select appropriate color code reference to complete the switch part no. above eg. TH706502185			
	01	Yellow				
	02	Green				
	04	Red				
	05	Black				
	08	Dark Blue				
Illumination	X	Non-illuminated				
	B	12V	(for illuminated switch bodies only)			
	C	24 V	(for illuminated switch bodies only)			
Illumination color	X	Non-illuminated				
	2	Green LED	(for illuminated switch bodies only)			
	4	Red LED	(for illuminated switch bodies only)			
	9	Red/Green LED	(for illuminated switch bodies only)			

Stainless steel versions, available upon request.

# Accessories

## Contact blocks

TH593566020	NO	2.8 × 0.5mm	Contact blocks for TP2, TK2, TR2	gold plated
TH593566020	NO	Insulated faston		
TH593561020	NO	Solder		
TH593566050	NC	2.8 × 0.5mm		
TH593566050	NC	Insulated faston		
TH593561050	NC	Solder		
TH593566000	1 NO + 1 NC	2.8 × 0.5mm		
TH593560000	1 NO + 1 NC	Insulated faston		
TH593561000	1 NO + 1 NC	Solder		
TH593567000	2 NO + 2 NC	2.8 × 0.5mm		
TH593563000	2 NO + 2 NC	Insulated faston		
TH593564000	2 NO + 2 NC	Solder		

TH493500000		Contact blocks for TP4, TP5	gold plated
-------------	--	-----------------------------	-------------

TH493520000	End plate for TP4, TP5
-------------	------------------------

TH493521000	(for 1 contact block)	Pairs of screws for TP4, TP5
TH493522000	(for 2 contact blocks)	
TH493523000	(for 3 contact blocks)	

## Mounting nuts (whole range)

TH593545000	Fixation nuts M16 × 1 (TP2, TP5, TP4)
TH593547000	Fixation nuts M22 × 1 flat (TP2, TP5, TP4)
TH493547000	Fixation nuts M22 × 1 large (TP5, TP4)

## Countersunk mounting bezel sets (TP2, TP5, TI2, TI5) For concealed versions only

TH593072000	for Switches 18 × 24 mm, IP40
TH593082000	for Switches 18 × 24 mm, IP67
TH593073000	for Switches 18 × 18 mm, IP40
TH593083000	for Switches 18 × 18 mm, IP67

## Panel plugs (TP2, TP5)

TH493000000	18 × 24, IP40
TH493002000	18 × 18, IP40
TH493004000	Ø 18, IP40

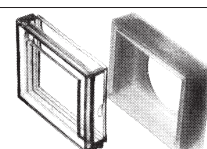
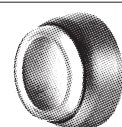
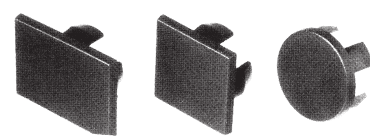
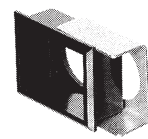
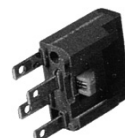
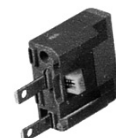
## Protecting covers (TP2, TP5, TP4)

TH493033000	Sealing ring D26, alu natural, silicon cap, IP65 (TP5, TP2, TI5, TI2 22.5 mm)
TH493033001	Sealing ring D25, alu natural, strong pebax cap, IP65 (TP5, TP2, TI5, TI2 22.5 mm)

TH493031000	Splashproof protection (transp. plast. upper part only) for exposed bezel 18 × 24 (TP2, TP5, TP4)
-------------	---

TH493010000	Guard bracket, for switches 18 × 24, anodised aluminum (wide sides raised)
-------------	--

TH493011000	Guard bracket, for switches 18 × 18, anodised aluminum (two sides raised)
-------------	---



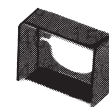


# Accessories

TH493012000 Guard bracket, for switches  $\varnothing$  18, anodised aluminum



TH493020000 Guard bracket, for switches 18 × 24, black plastic (all sides raised)



TH593032000 Protecting cover with transparent plastic lid, 18 × 18



TH593035000 Protecting cover with transparent plastic lid, 18 × 24



## Anti-rotation devices (TK2, TR2, TE8)

TH053205000 for panel cut-out 16.2 mm (TK2, TR2)



TH493532000 for panel cut-out 22.5 mm (TK2, TR2)



TH593080000 Adapter set, key- and rotary switches (TK2, TR2)



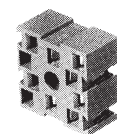
TH060661000 panel cut-out 16.2 mm (TE8)



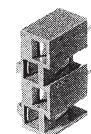
## Plug in socket (TP2)

TH593578000 for 1 contact block TP2 with indicator terminals

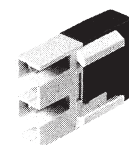
TH593568000 for 2 contact blocks TP2 with indicator terminals



TH593582000 for 1 contact block TP2 without indicator terminals



TH593584000 Diode carrier with 2 diodes 1N4007, faston connection without insulation



# Accessories

## Extra and spare keys (TK2)

TH493049001 to TH493049020 (KABA MICRO, EB0001 – EB0020)

## Faston Connectors (TP2, TK2, TR2, TP8)

TH593571000 Faston pin,  $2.8 \times 0.5$  mm, insulated, for wires  $0.8 - 1.4$  mm<sup>2</sup> (TP2, TK2, TR2)



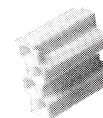
TH593572000 Faston pin,  $2.8 \times 0.5$  mm, for wires  $0.5 - 1.0$  mm<sup>2</sup> (TP2, TK2, TR2, TP8)



TH593573000 Faston pin,  $2.8 \times 0.5$  mm, for faston casings, for wires  $0.3 - 0.6$  mm<sup>2</sup> (TP2, TK2, TR2)



TH593574000 Sleeve and casing for th25 contact block 1 NO + 1 NC (TP2, TK2, TR2)



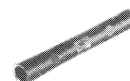
TH593575000 Sleeve and casing for th25 lamp terminals (TP2, TK2, TR2)



# Accessories

## Miscellaneous (Lamp extractor, metal and plastic spanners)

TH492000000 Lamp extractor

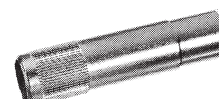


TH492005000 Lens extractor

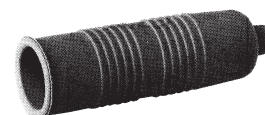


TH492100000 Metal box-spanner, fixation nut M16 × 1

TH492105000 Metal box-spanner, fixation nut M22 × 1



TH493510000 Insulated terminal cover, for terminal wires



## Lamps (TP2, TP5, TI2, TI5)

### Incandescent lamps

TH590000000 6 V

TH590001000 12 V

TH590006000 24 V

TH590004000 48 V

### Midget – grooved Led

TH590231000 Yellow 6 V

TH590234000 Yellow 12 V

TH590237000 Yellow 24V

TH590240000 Yellow 48 V

TH590232000 Green 6 V

TH590235000 Green 12 V

TH590238000 Green 24 V

TH590241000 Green 48 V

TH590230000 Red 6 V

TH590233000 Red 12 V

TH590236000 Red 24 V

TH590239000 Red 48 V