

Ledex® C Frame Size C33M — DC Operation

Part Number: C33M - **XXX** - M- 33

All catalogue products manufactured after April 1, 2006 are RoHS Compliant

Select from performance chart below

Specifications

Continuous Duty Cycle	At 20°C ambient temperature.
Intermittent Duty Cycle	See below
Holding Force	18.9 N at 20°C
Coil Insulation	Class "A": 105°C max. temperature standard. Other temperature classes are available
Coil Termination	1/4" QC
Plunger Weight	14.2 g
Total Weight	110.6 g
Dimensions	See page H40

Performance

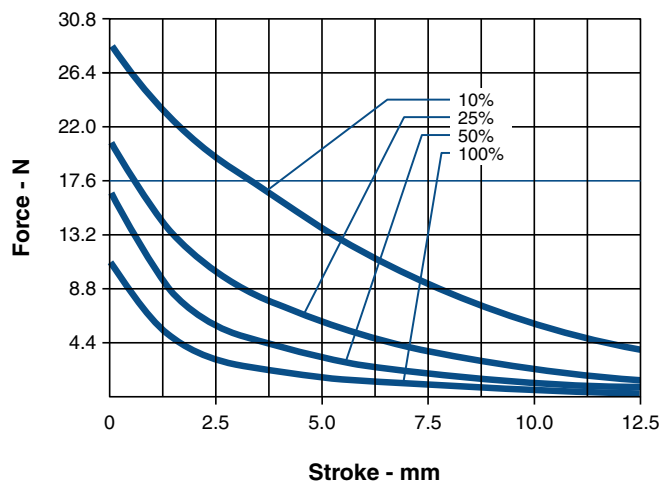
Maximum Duty Cycle	100%	50%	25%	10%
Maximum ON Time (sec) when pulsed continuously	∞	38	16	6
Maximum ON Time (sec) for single pulse	∞	379	145	38
Watts (@ 20°C)	7	14	28	70
Ampere Turns (@ 20°C)	828	1172	1656	2622

Coil Data						
Part Number (Nom)	Resistance (@20°C)	Ref # Turns	VDC (Nom)	VDC (Nom)	VDC (Nom)	VDC (Nom)
C33M-273-M-33	5.38	747	6	8.5	12	19
C33M-272-M-33	21.00	1458	12	17	24	38
C33M-271-M-33	81.20	2812	24	34	48	76
C33M-270-M-33	329.25	5616	48	68	96	152
C33M-269-M-33	2043	13623	120	169	240	378

NOTES:

1. All data is typical.
2. Force testing is done with the solenoid in the horizontal position.
3. All data reflects operation with no heatsink.
4. Magnetic latching versions available. Pull versions standard; push versions available.
5. Other coil terminations available.
6. All specifications subject to change without notice.

Typical Force @ 20°C



How to Order

Select the part number from the table provided. (For example, to order a 25% duty cycle unit rated at 48 VDC, specify C33M-271-M-33.

Please see www.ledex.com (click on Stock Products tab) for our list of stock products available through our distributors.

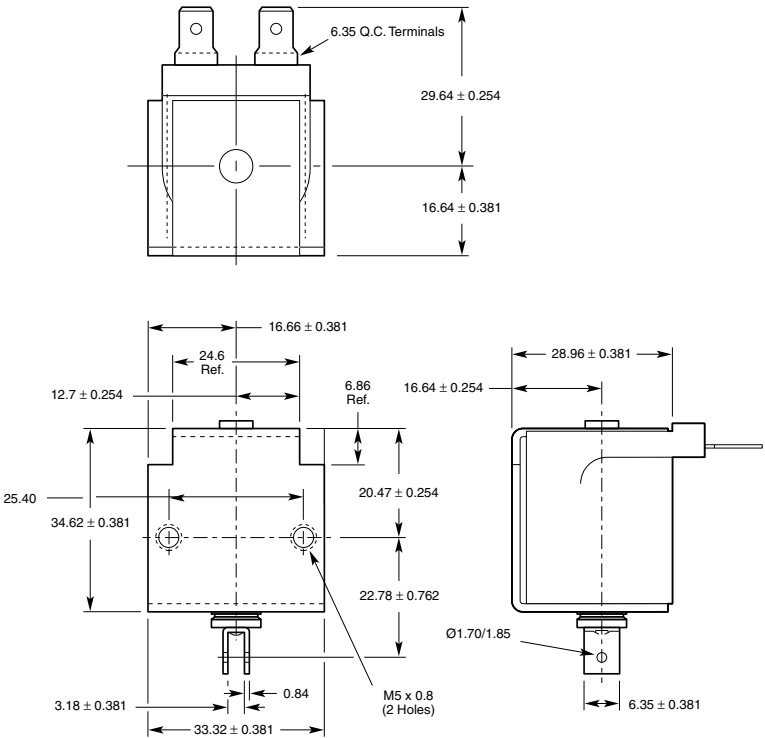
LINEAR Open Frame

Ledex® C Frame Dimensions

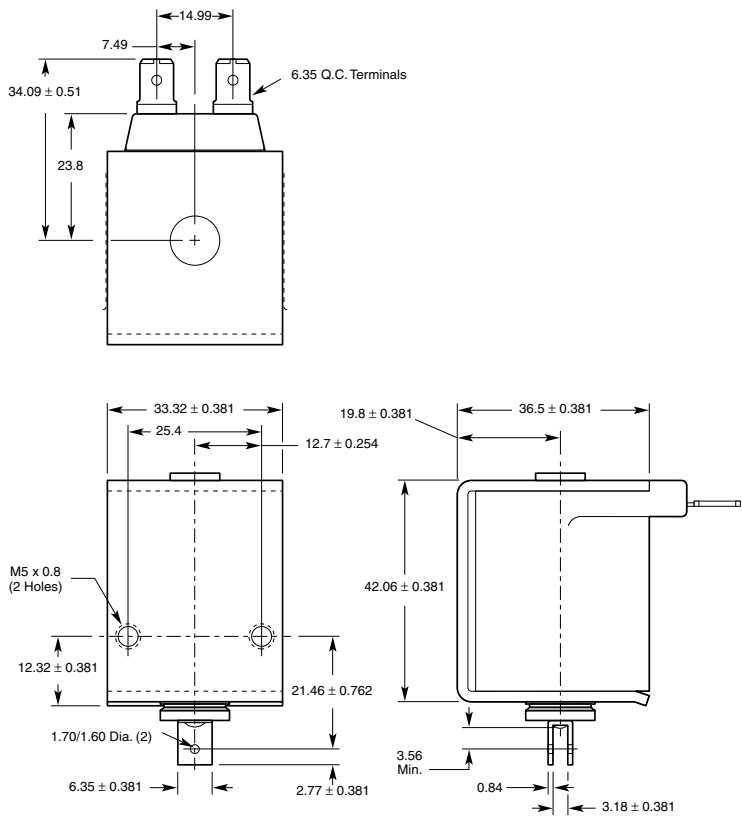
mm

All solenoids are illustrated in energised state

C33M



C34M



All specifications subject to change without notice.

LINEAR Open Frame